

FOURTH QUARTERLY REPORT

Quarterly Report on Operations for the Period 1st April to 30th June 2008

Highlights

- Negotiations completed enabling the July commencement of a Pre-feasibility Study at the Skaergaard PGM and Gold project in Greenland.
- Regional soil and rock chip geochemical sampling completed over the Polar Bear Project in Western Australia.
- In-house technical review commences on the Munni Munni PGM project.
- Geochemical sampling completed at the Southern Cross Project in Namibia.
- Successful completion of Rights Issue and private placement raise approximately \$7.3 Million in additional exploration funds.

Summary

The Company completed significant field and corporate activities during the last quarter of operations.

In particular, negotiations were finalised for the commencement of a Pre-feasibility Study at the Company's flagship pgm and gold project, Skaergaard, in East Greenland. The Company is pleased to confirm that a minimum of 4000 metres (8 drill holes) of diamond drilling will be carried out, commencing on the 1st August. The diamond drilling will focus on obtaining further pgm and gold mineralisation characteristics of the Gold Zone and the underlying Palladium Zone. Additional geotechnical information is expected from one diamond hole planned to investigate a possible portal location for access to any future potential mining operations. Diamond drill core intersections through the Gold Zone and Palladium Zone will be assayed in 20 centimetre intervals using an Australian analytical laboratory, and assay results are not expected until January 2009. A new block model for the Skaergaard pgm and gold resource will also be compiled, incorporating all of the new drilling data.



In addition to the commencement of the Pre-feasibility diamond drilling program, baseline environmental studies will be carried out by a Danish consulting firm in the general Skaergaard region. All activities planned for this year's Pre-feasibility Study require major logistical support in this remote area of East Greenland, including company provided personnel accommodation and continuous helicopter support for access and transportation of drill rigs. A budget of \$4 Million for this year's program has been estimated.

Exploration activities in Greenland this year will also evaluate three exploration licences recently granted to the company at Hinks Land, Vestfjord and Kap Edvard Holm. Extensive mapping and outcrop sampling will be carried out.

The company also successfully completed a 1 for 5 Rights Issue (at \$0.45 per new share) to shareholders during the quarter. Strong support for the Rights Issue was received from shareholders, with an approximate 15% shortfall remaining, which was taken up by the underwriters to the issue, Patersons of Perth.

Further capital was also accessed via a private placement, in order to streamline activities on the Pre-feasibility Study at Skaergaard and to continue exploration programs at other important projects. The private placement, made in two stages (at \$0.55 per new share) and comprising approximately 11.7 million shares, or 19.99% of the company, was made to Panther Resources, a New York based investment company associated with Dr. Thomas S Kaplan.

The first stage of the placement has been completed with Directors authorising a 13% placement to Panther. The remaining second stage, of an additional 6.99% Platina shares to be placed to Panther, will be confirmed at a General Meeting of the company, which will be held (at a date to be advised) in August, where shareholders will approve the transaction.

The Company is pleased to advise that upon the successful completion of the second stage of the placement to Panther, working funds will total over \$11 Million which is considered satisfactory for the continuation Pre-feasibility Studies at Skaergaard and general exploration elsewhere.

QUARTERLY REPORT
For the period 1st April- 30th June, 2008

Skaergaard, Greenland
EL2007/01
Platina Resources Ltd 100%

The commencement of pre-feasibility studies and preparation for the 2008 field season dominated the quarter. All logistical items have been confirmed and operations are set to begin late July. The field season will comprise of 4,000m(+) diamond drilling, detailed environmental baseline studies and geotechnical appraisal of mining infrastructure locations.

Southern Cross, Namibia
EPL3951
Platina Resources Ltd earning 80%

On-site exploration activities at the Southern Cross layered mafic intrusion commenced in May, using South African contractors, Remote Exploration Services (RES). The purpose of the field program was to conduct a high resolution geochemical survey analysing for Ag, Au, Cu, Ni, Co, Pd, Pt and Zn. The survey consisted of three, 5km traverses over part of the intrusion that is obscured by overburden but proximal to outcrop. A total of 600 loam and calcrete samples were obtained and are currently in for analysis, results are awaited. Predicated on the analytical results, further field campaigns are anticipated for 2008. These are likely to consist of further geochemical sampling and probable diamond drilling.

Fifield, NSW
EL6228
Platina Resources 100%

Following the continued strong performance of base metals, a review of the cobalt-nickel laterite potential over the ultramafic portion of the Owendale Intrusion was undertaken.

During the quarter assays from the reverse circulation drilling targeting deep leads, returned no significant pgm grades.

Polar Bear, Western Australia
E63/355, M15/710, M151110, M15/1111, M15/1148, M15/1177-M15/1179,
M15/1390, M15/1486, M15/1487, M63/230, M63/255, M63/279, M63/364, M63/398-
M63/405, P15/4044, P15/4045, P63/683
Platina Resources Ltd earning 70%

Regional Geochemical sampling was undertaken employing portable XRF technology to delineate new anomalous regions, in conjunction with field mapping and rock chip sampling.

Various anomalous regions have been identified and are expected to be confirmed by conventional assay techniques within the coming quarter.

Sub-Audio Magnetic (SAM) surveying has been confirmed to begin in July. This is a proven technique in imaging the sub-surface structures and lithologies beneath salt lakes. Additionally it allows for the collection of various physically independent data sets at the same time.

The survey will generate high resolution imagery of lithologies and structures beneath the salt lake surface, which historically has hampered other geophysical techniques. SAM will be conducted over and around the Hall's Knoll area where rock chip samples have graded up to 23g/t PGE + Au (refer to Figure 1).

A diamond drilling program is scheduled for late 2008 to test significant anomalous regions and structures of interest beneath the overlying salt lake.

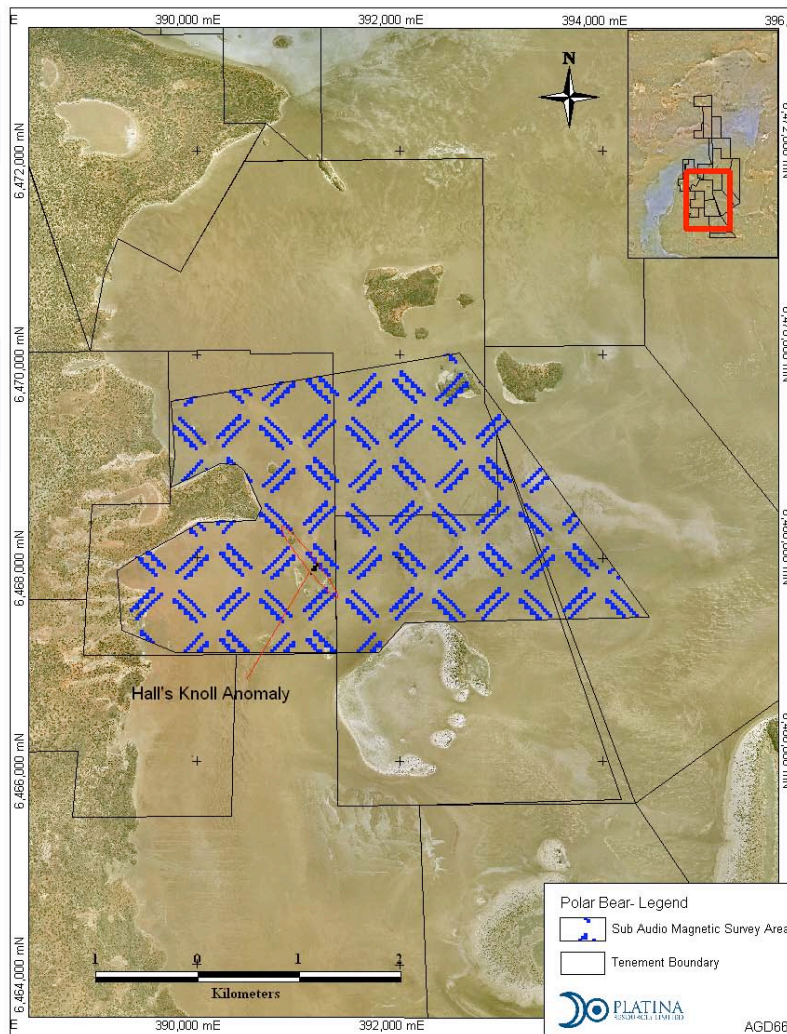


Figure 1

Munni Munni, Western Australia

**M47/123-126, M47/141-144, E47/0905, E47/1015, E47/1074
Platina Resources Ltd 100%**

This project has remained under active review following completion of economic modelling during the previous quarter. The company is taking the necessary steps to ensure that the currently defined 23mt JORC Resource remains exploitable given favourable market conditions.

Mt Venn, Western Australia

**E38/1000
Platina Resources Ltd 100%**

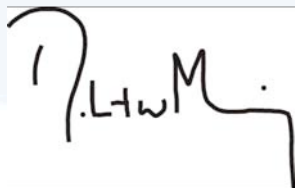
No exploration activities were carried out during this quarter.

Tadpole Creek, Queensland

**EPM151841 (application)
Platina Resources Ltd 100%**

No activities were carried out this quarter. Work is to commence upon successful granting of tenement status.

Yours faithfully



**Robert W. Mosig
Executive Chairman**

The information in this report that relates to Exploration Results, Mineral Resources or Ore resources is based on information compiled by Mr R W Mosig who is a full time employee of Platina Resources Limited and who is a Fellow of The Australasian Institute of Mining and Metallurgy. Mr Mosig has sufficient experience which is relevant to the style of mineralisation and type of deposit under consideration and to the activity which he is undertaking to qualify as a Competent Person as defined in the 2004 Edition of the Australian Code for Reporting of Exploration Results, Mineral Resources and Ore Reserves. Mr Mosig consents to the inclusion in the report of the matters based on this information in the form and context in which it appears.